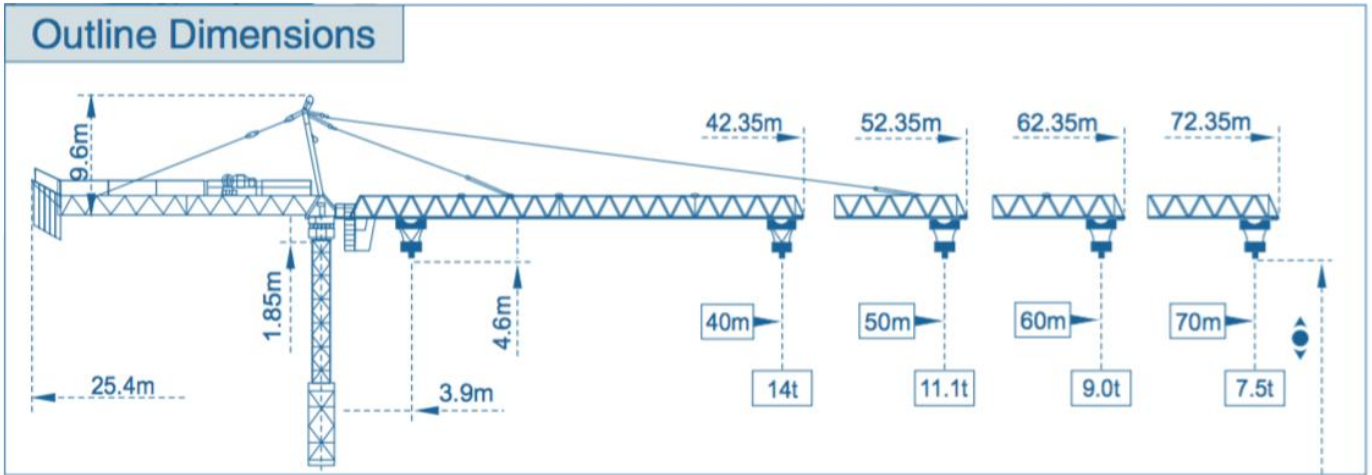




STT 7075-28

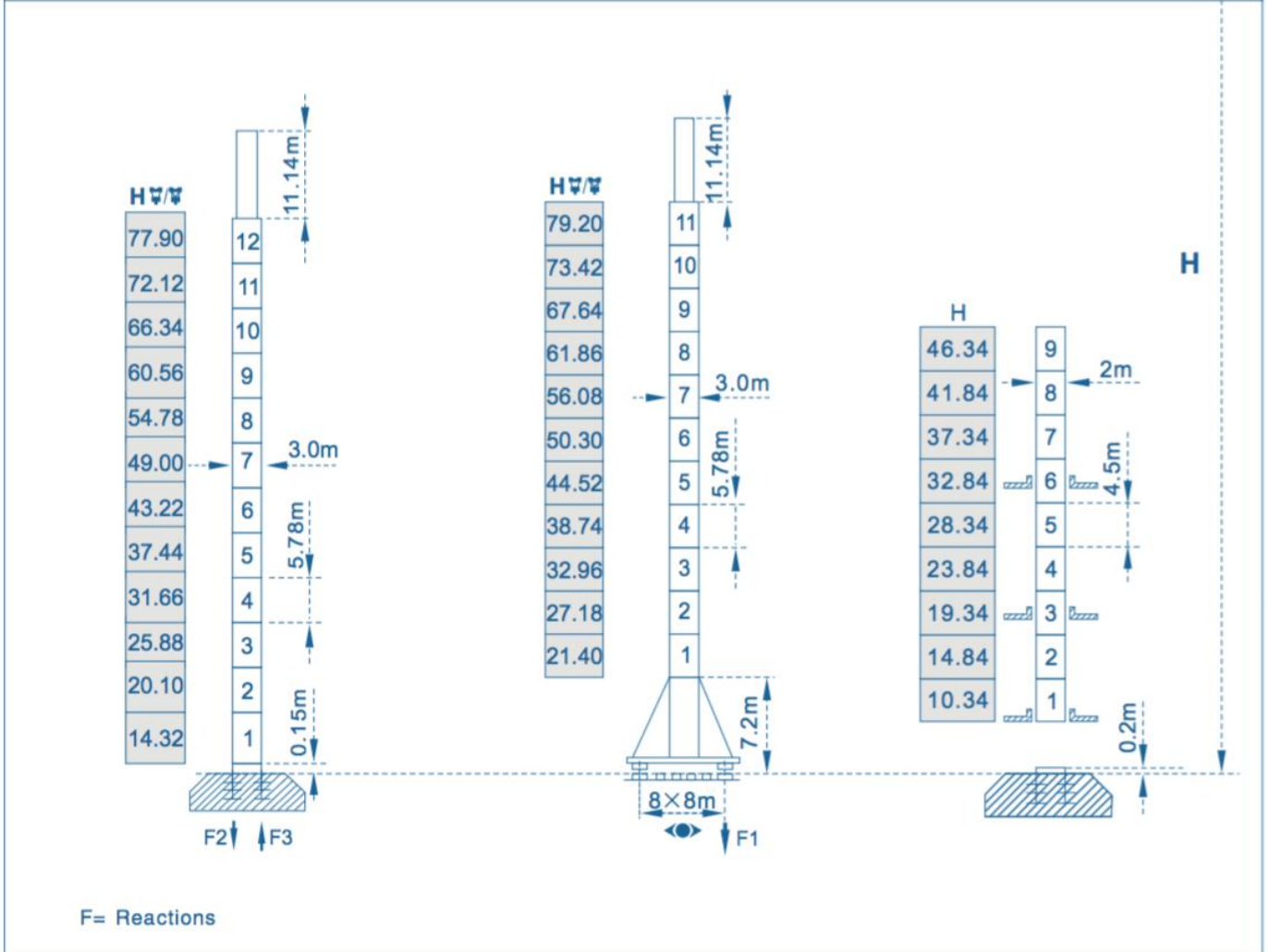
Experts in the field





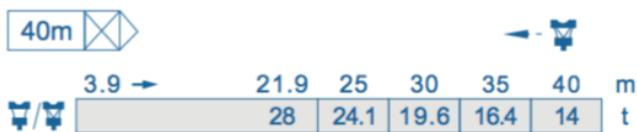
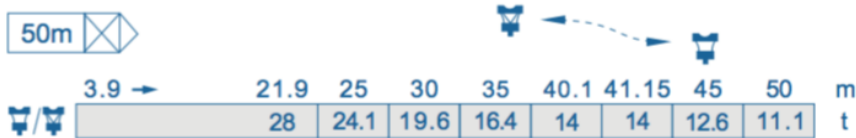
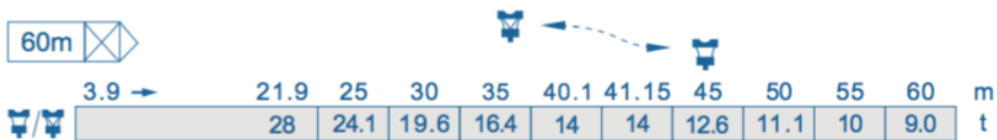
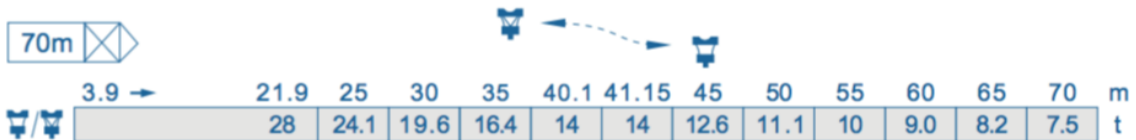
Mast

□ 3m × 3m □ 2m × 2m



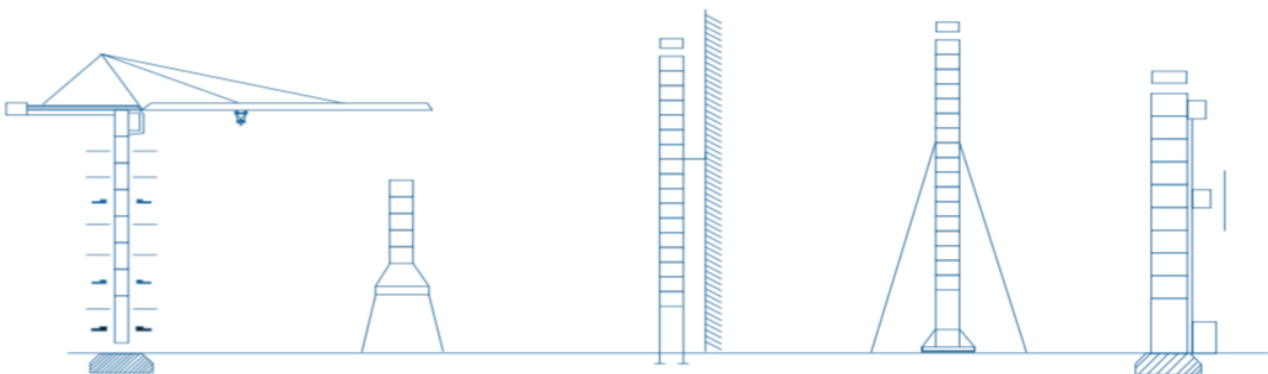
Load diagrams









Jib



Standard trolley 2/4 fall (when using  subtract 0.4t from the loads )

Mounting Possibilities



Specifications Mechanisms						
Mechanisms	Motor type	Speeds m/min		Capacity t.	Rope lenght	Motor kW
Hoisting	120LVF70 	2 fall	0-30	14	500m >500m ★	90
			0-60	8		
		4 fall	0-15	28		
			0-30	16		
	150LVF70 	2 fall	0-36	14	800m >800m ★	110
			0-72	8		
4 fall		0-18	28			
		0-36	16			
Trolleying	25DVF25B 	0-65				18.5
Slewing	RCV185D 	0-0.7 r/min				3×185N.m
	37RVF 	0-0.7 r/min				3×9
	RCV185E 	0-0.7 r/min				2×185N.m
	24RVF 	0-0.7 r/min				2×9
Travelling	42TVF 	0-32				6×5.2

★ To be supplied according to client's specific requirements

This commercial documents is not legally bindig.
For any technical information, please refer to
the corresponding instructions.

